

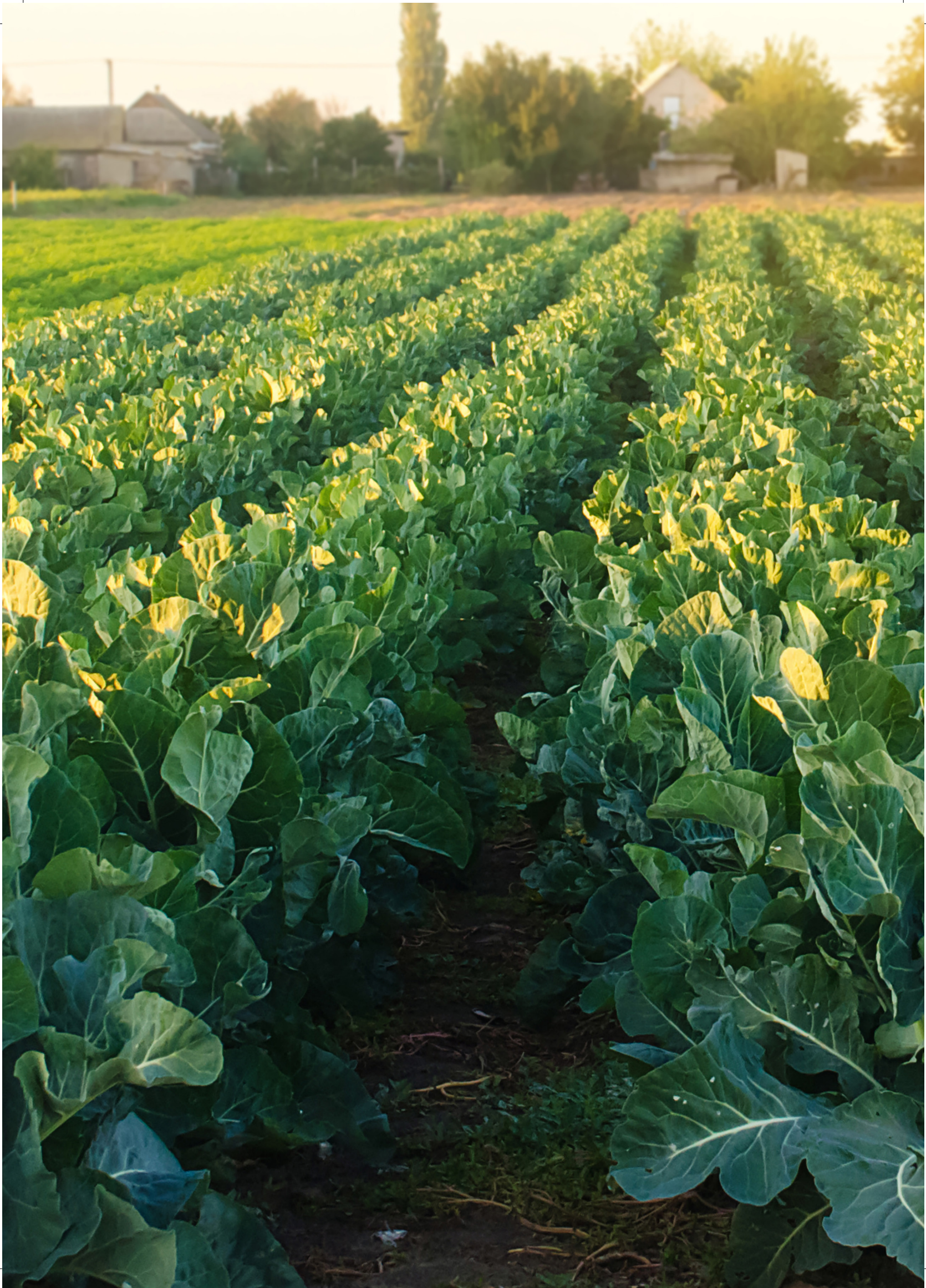


# SEMINIS

## PRODUCT GUIDE 2023-2025

NEW ZEALAND





# CONTENTS

**1**

**BRASSICA**

Broccoli, Cauliflower

**11**

**LEAFY**

Spinach, Lettuce

**19**

**LARGE SEED**

Sweet corn

**23**

**ROOT & BULB**

Onion, Leek,  
Spring Onion

**31**

**TOMATO**

Tomato

**35**

**TECHNICAL  
INFORMATION**

Variety Summaries  
Resistance Codes  
Seed Quality &  
Quality Assurance

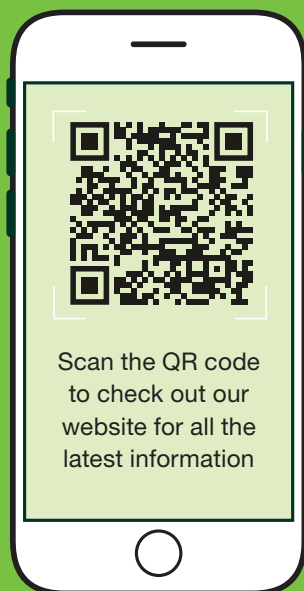
**47**

**MEET THE  
TEAM**

# LET'S GROW BETTER TOGETHER

Seminis is proud to operate on the belief that every generation can be better than the last. It's a principle that goes well beyond innovative vegetable seed development. We believe that if tomorrow is to be better for our partners, it's up to us to work in collaboration to make it so.

This strongly held conviction allows us to fully understand and deliver on the unique needs of open-field and protected growers in greenhouse growing environments. Partnering with everyone from fresh market growers to processing professionals, and small scale to large commercial farmers, we offer more than 20 different crops in more than 150 countries and territories.



# BRASSICA

BROCCOLI, CAULIFLOWER



SCAN ME

*View our range of  
Broccoli and Cauliflower*





## BROCCOLI



### FANTASTICO

Fantastico is a mid-season variety with a heavy semi-domed head. It's very uniform in both size and shape with small beads, a firm smooth dome and a fresh green colour. Fantastico's small frame allows for high density plantings and lower risk of head rot.

#### FEATURES

**Shape:**  
Dome

**Bead size:**  
Fine

**Season:**  
Transition



### IRON CMS

Iron CMS has a firm, compact head with thick stems and excellent weight, and its leaves have narrow petioles for easy trimming. Iron CMS has a concentrated harvest and great tolerance to hollow stem. It produces uniform crowns with short florets and fine beads.

#### FEATURES

**Shape:**  
Dome

**Bead size:**  
Fine to medium

**Season:**  
Transition



### TITANIUM

Titanium is a High-Rise™ type with good airflow allowing for reduced labour costs at harvest. It has a firm head with fine beads that minimises damage from water soaking and head rot.

#### FEATURES

**Shape:**  
Dome

**Bead size:**  
Fine

**Season:**  
Cool/Transition



SCAN QR CODE TO  
WATCH THE BENEFITS  
OF HIGH-RISE™  
TITANIUM HARVESTING  
EFFICIENCIES FOR  
LABOUR SAVINGS

# BROCCOLI



**LEGACY**

Legacy is a reliable, cool season type. It is strong, uniform and has early vigour in cold conditions. Legacy has fine-beaded, dome-shaped heads with dark green colour and good stem thickness.

## FEATURES

**Shape:**  
Dome

**Bead size:**  
Fine to medium

**Season:**  
Cool



**CHEVALIER**

Chevalier looks and performs similar to Legacy, with improved uniformity. The vigorous plant is erect and produces well-formed heads with an appealing dome shape and tight branches. Chevalier has very good cold tolerance.

## FEATURES

**Shape:**  
Dome

**Bead size:**  
Fine to medium

**Season:**  
Cool



**HERITAGE**

Heritage has demonstrated outstanding holding ability maintaining its deep green colour, when others begin to purple. Its head is typically firm and uniform, with good shelf life. Heritage works especially well in the late-spring changeover season.

## FEATURES

**Shape:**  
Dome

**Bead size:**  
Fine to medium

**Season:**  
Cool



## BROCCOLI

---



### EIFFEL

Eiffel is a High-Rise™ type that's new to trial and a part of the High Rise™ portfolio. It is a grower friendly variety with improved uniformity and visible crowns. Like all High-Rise™ types, it has been developed to reduce labour during harvest.

## FEATURES

---

**Shape:**

Dome

**Bead size:**

Fine to medium

**Season:**

Spring/Summer

---



# TRANSPLANT/HARVEST GUIDE

Transplanting
  Harvesting

PRODUCT	WEEKS TO MATURITY	DEC	JAN	FEB	MAR	APR	MAY	JUN	JUL	AUG	SEP	OCT	NOV
<b>UPPER NORTH ISLAND</b>													
FANTASTICO	8-10		█	█	█	█	█	█					
IRON CMS	8-15	█	█	█		█	█	█		█	█		█
TITANIUM	12-18					█	█	█		█	█	█	
LEGACY	11-15			█	█	█	█	█	█				
CHEVALIER	11-15			█	█	█	█	█	█	█	█	█	
HERITAGE	8-15			█	█	█	█	█	█	█	█	█	
EIFFEL	10							█	█	█	█	█	█
<b>LOWER SOUTH ISLAND</b>													
FANTASTICO	8-10		█	█		█	█	█					
IRON CMS	10-11		█	█		█	█	█					
TITANIUM	12-18		█	█		█	█			█	█		
LEGACY	12-18			█	█	█	█	█	█	█	█	█	█
CHEVALIER	12-18			█	█	█	█	█	█	█	█	█	█
HERITAGE	10-12		█	█	█			█	█	█			
EIFFEL	10							█	█	█	█	█	█
<b>MANAWATU &amp; NELSON</b>													
FANTASTICO	8-10		█	█	█	█	█						
IRON CMS	10-12		█	█	█			█	█				
TITANIUM	12-18			█	█	█	█	█		█	█		
LEGACY	12-18			█	█	█	█	█	█	█	█	█	█
CHEVALIER	12-18			█	█	█	█	█	█	█	█	█	█
HERITAGE	10-12		█	█	█			█	█	█			
EIFFEL	10							█	█	█	█	█	█

## CAULIFLOWER



### SV5965AC

When time is of the essence, SV5965AC is a leading choice. It matures 3 weeks faster than other varieties in its time slot and its large, dense curd and strong frame protect it from the elements. SV5965AC is perfect for the fresh and processing markets.

#### FEATURES

**Curd colour:**



**Curd Appearance:**

Large, heavy and dense

**Plant vigour:**

Strong

**Season:**

Cool

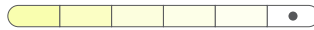


### SV5982AC

SV5982AC is a logical variety for planting immediately after SV5965AC. A true winter cauliflower, SV5982AC produces an erect plant with good curd protection, and a superior white curd colour.

#### FEATURES

**Curd colour:**



**Curd Appearance:**

Large, heavy and dense

**Plant vigour:**

Strong

**Season:**

Cool



### TIPTON

Tipton's vigorous, large-framed plant performs very well in the spring and early summer. It produces dense, extra-white curds on a large frame that offers excellent curd protection. Tipton has excellent uniformity and has produced well under pressure from stem cracking and head-splitting. Tipton matures 15–17 weeks after transplant.

#### FEATURES

**Curd colour:**



**Curd Appearance:**

Medium to deep

**Plant vigour:**

Medium to strong

**Season:**

Transition

## CAULIFLOWER

---



### CHEDDAR

Cheddar is a hybrid novelty cauliflower with an attractive orange curd. It's a medium sized plant that produces smooth, domed heads with medium weight and firmness in the curds.

### FEATURES

---

**Curd colour:**



**Curd Appearance:**

Firm, smooth and medium

**Plant vigour:**

Medium

**Season:**

Cool

---



**TRANSPLANT/HARVEST GUIDE**

■ Transplanting ■ Harvesting

PRODUCT	WEEKS TO MATURITY	JAN	FEB	MAR	APR	MAY	JUN	JUL	AUG	SEP	OCT	NOV	DEC
<b>PUKEKOHEE</b>													
SV5965AC	17-18	■	■	■									
SV5982AC	16-18		■	■	■								
<b>MANAWATU &amp; UPPER SOUTH ISLAND</b>													
SV5965AC	17-18			■	■	■	■						
SV5982AC	16-18		■	■	■								
<b>SOUTH ISLAND</b>													
SV5965AC	17-18	■											
SV5982AC	16-18		■	■	■								



# LEAFY

SPINACH, LETTUCE



SCAN ME

*View our range of  
Spinach and Lettuce*

“

At The Fresh Grower we strive to find the best varieties to grow all year round to suit changing weather conditions year after year. Outstanding genetics in the Spinach range from Seminis are proven great performers and we will continue collaborating with the innovative team at Seminis.

”

*GARRY YEE  
THE FRESH GROWER*



## SPINACH



### SV2157VB

SV2157VB is a spinach that radiates during summer heat. This variety has an excellent amount of thickness with uniformity in leaf size. Its dark, glossy leaves and good yield potential make it an attractive variety that adapts well to summer production.

#### FEATURES

**Vigour Scale: (1=low, 10=high)**

3

**Leaf shape:**

Oval

**Smoothness:**

Semi-savoy

**Leaf colour:**

Dark green

**Resistance:**

HR Pe:1-13,15,16,18

**Usage:**

Baby leaf



### MAGNETIC

Magnetic is adaptable to late spring and summer sowing for a summer harvest. It has High Resistance to Downy mildew, oval-shaped leaves, nice savouriness, mid-light green leaves and upright growth.

#### FEATURES

**Vigour Scale: (1=low, 10=high)**

3

**Leaf shape:**

Oval to slightly pointed

**Smoothness:**

Semi-savoy

**Leaf colour:**

Dark green

**Resistance:**

HR Pe:1-15,17

**Usage:**

Baby leaf



### KONA

Kona is savoy to semi-savoy with medium dark green colour, round to oval in shape, semi erect plant habit, leaves are thick and very uniform. High yield potential most suited for warmer time slot.

#### FEATURES

**Vigour Scale: (1=low, 10=high)**

3

**Leaf shape:**

Round to oval

**Smoothness:**

Semi-savoy to Savoy

**Leaf colour:**

Medium dark green

**Resistance:**

HR Pe:1-15,17

**Usage:**

Baby leaf

# SPINACH



**SV2146VB**

SV2146VB has a broad planting window and heat tolerance, making it most ideal for summer conditions. Its leaves are round, dark green and semi-savoy.

## FEATURES

**Vigour Scale: (1=low, 10=high)**

3

**Leaf shape:**

Oval

**Smoothness:**

Semi-savoy

**Leaf colour:**

Dark green

**Resistance:**

HR Pe:1-13,15,16,18

**Usage:**

Baby leaf



**RANGITOTO**

Rangitoto will be your pick for the shoulder season. With excellent uniformity and glossy, dark leaves Rangitoto offers good adaptability thanks to its wide harvest window.

## FEATURES

**Vigour Scale: (1=low, 10=high)**

7

**Leaf shape:**

Round to oval

**Smoothness:**

Semi-savoy

**Leaf colour:**

Medium dark green

**Resistance:**

HR Pe:1-16,19

**Usage:**

Baby leaf



**SV3580VC**

SV3580VC is a reliable and versatile, dark green savoy leaf spinach. With an upright plant habit, it is a convenient alternative that offers good yield between seasons. SV3580VC is an ideal variety for both bunching and baby leaf markets.

## FEATURES

**Vigour Scale: (1=low, 10=high)**

6

**Leaf shape:**

Oriental

**Smoothness:**

Smooth

**Leaf colour:**

Dark green

**Resistance:**

HR Pe:1-13,15,16,18

**Usage:**

Baby leaf and bunching

## SPINACH



### RS 06683549

RS 06683549 is a fast maturing, easy harvest winter variety. It is quick to reach maturity under cold conditions and is suitable for both the bunching and baby leaf markets.

#### FEATURES

**Vigour Scale: (1=low, 10=high)**

8

**Leaf shape:**

Oriental

**Smoothness:**

Smooth

**Leaf colour:**

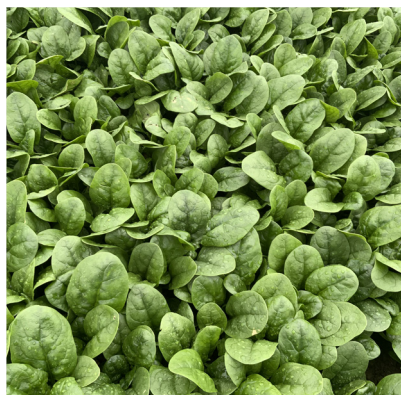
Dark green

**Resistance:**

HR Pe:1-11,13,15,16,18

**Usage:**

Baby leaf and bunching



### MOTUTAPU

Motutapu is smooth to slightly savoy and shiny medium dark leaf spinach. Fast growing with very erect habit. Oval to slightly pointy shape, medium thickness. Excellent leaf shape and size uniformity. Suitable for cold transition harvest time slot (late Autumn & Early Winter/Late Winter and Early Spring harvest).

#### FEATURES

**Vigour Scale: (1=low, 10=high)**

8

**Leaf shape:**

Oval to slight point

**Smoothness:**

Smooth to Semi-savoy

**Leaf colour:**

Medium dark green

**Resistance:**

HR Pe:1-16,19

**Usage:**

Baby leaf

## HARVEST GUIDE

■ Transplanting ■ Harvesting

PRODUCT	JAN	FEB	MAR	APR	MAY	JUN	JUL	AUG	SEP	OCT	NOV	DEC
<b>GUIDE FOR PRODUCTION</b>												
SV2157VB	■	■	■	■	■	■	■	■	■	■	■	■
MAGNETIC	■	■	■	■	■	■	■	■	■	■	■	■
KONA	■	■	■	■	■	■	■	■	■	■	■	■
SV2146VB	■	■	■	■	■	■	■	■	■	■	■	■
RANGITOTO	■	■	■	■	■	■	■	■	■	■	■	■
SV3580VC	■	■	■	■	■	■	■	■	■	■	■	■
RS 06683549	■	■	■	■	■	■	■	■	■	■	■	■
MOTUTAPU	■	■	■	■	■	■	■	■	■	■	■	■

## QUICK REFERENCE: SPINACH DISEASE RESISTANCE GUIDE

VARIETIES	TYPE	PACKAGE
SV2157VB	Semi-savoy	HR Pe:1-13,15,16,18
MAGNETIC	Semi-savoy	HR Pe:1-15,17
KONA	Semi-savoy to Savoy	HR Pe:1-15,17
SV2146VB	Semi-savoy	HR Pe:1-13,15,16,18
RANGITOTO	Semi-savoy	HR Pe:1-16,19
SV3580VC	Smooth	HR Pe:1-13,15,16,18
RS 06683549	Smooth	HR Pe:1-11,13,15,16,18
MOTUTAPU	Smooth to Semi-savoy	HR Pe:1-16,19

## LETTUCE ICEBERG



### BUBBA

Bubba is an iceberg lettuce that is suitable for winter production for both the fresh and processing markets.

### FEATURES

**Season:**

Winter

**Resistance:**

–

## LETTUCE FANCY



### FRILLICE

Frillice is a unique open loose-leaf type that has a nice dark green, shiny colour and crisp texture. It has a serrated leaf and very good bolting tolerance. It has healthy attractive leaves, which are suitable for machine harvesting.

### FEATURES

**Season:**

Spring, Autumn, Summer

**Resistance:**

HR BI:16,17

IR LMV:1

## TRANSPLANT/HARVEST GUIDE

■ Transplanting ■ Harvesting

PRODUCT	WEEKS TO MATURITY	DEC	JAN	FEB	MAR	APR	MAY	JUN	JUL	AUG	SEP	OCT	NOV
BUBBA	12–14						■	■	■		■	■	



# LARGE SEED

SWEET CORN



SCAN ME

*View our range of  
Sweet Corn*

“

Our company is pleased to deal with Seminis for their exceptional customer service and seed quality. I was impressed with the performance of Acceleration and SV1446SD sweetcorn. What is most important is the eating quality of Acceleration, which is truly outstanding and I am sure Watties consumers enjoy it too.

”

*ANDREW KOGTENKO  
CROP AGRONOMIST,  
KRAFT HEINZ/WATTIES*



# SWEET CORN YELLOW /DUAL PURPOSE



## SV1446SD

Offering growers high yield and great cob uniformity potential, SV1446SD ticks a lot of boxes. The yellow hybrid as an easy to pull, attractive green husk with good tip fill and disease package.

### FEATURES

**Kernel colour:**

Yellow

**Average Cob Size (cm):**

20.5 x 5

**Resistance:**

HR: RpG59  
IR MDMV/SCMV/Pst/Bm:0/Et:1



## ACCELERATION

Get ahead with Acceleration! Acceleration offers sweet corn growers a market-leading disease package with High Resistance to some races of Common Rust (RpG5). Acceleration has outstanding cob characteristics with excellent uniformity, tip fill and husk cover; not to mention it tastes fantastic.

### FEATURES

**Kernel colour:**

Yellow

**Average Cob Size (cm):**

20 x 4.5

**Resistance:**

HR RpG5  
IR MDMV/SCMV/Pst/Bm:0/Et:1



## SV1514SK

SV1514SK has an exceptional field holding ability and ability to withstand heavy rain and wind. Excellent husk cover. Plant is approx 180 cm with cobs set at 55 cm height. It has potential to produce two marketable cobs.

### FEATURES

**Kernel colour:**

Yellow

**Average Cob Size (cm):**

20 x 4.5

**Resistance:**

HR RpG5  
IR MDMV/SCMV/Pst

# SWEET CORN BI-COLOUR



## EX 08705788

EX 08705788 is a main season bi-colour sweet corn with a very large cob. It permits full season harvest in rust-prone areas and matures approximately 93 days after planting. It has greater adaptation in areas where Maize dwarf mosaic virus resistance is present. Its good kernel colour contrast and improved eating quality, make it attractive to the consumer market.

### FEATURES

**Kernel colour:**

Bi-colour

**Average Cob Size (cm):**

20 x 5

**Resistance:**

HR Rp1D  
IR MDMV/SCMV

## INCEPTION

Bi-colour sweet corn offering attractive green husk and good tip fill. Inception provides growers with good cob length and uniformity. Similar to Obsession and EX08767143 types, Inception is a slightly stronger plant with good kernel colour differentiation 16–18 kernel rows.

### FEATURES

**Kernel colour:**

Bi-colour

**Average Cob Size (cm):**

19 x 5

**Resistance:**

HR Rp1D+RpG  
IR Pst/Et

# ROOT & BULB

ONIONS



SCAN ME

*View our range of Onions*

“

Seminis is committed to developing onions suited to New Zealand conditions. We have access to early-pipeline genetics which allows us to select the variety that will provide the disease resistance, yield and skin colour that growers are looking for.

”

*FRANCO ASORO  
BAYER US VEGETABLES R&D  
SEMINIS ONION BREEDER*

## ONION HYBRID



NEW TO TRIAL



### SVNH3211

With a top-down date of 7–10th December in Pukekohe, SVNH3211 is a mid-day hybrid that matures in a slot traditionally taken by short-day varieties. SVNH3211 is firm, uniform, has a globe shape, pink root and fusarium resistance and great storage potential.

#### FEATURES

**Season:**  
First Early

**Shape:**  
Globe

**Resistance:**  
Full disease resistance claim to be confirmed.

**Storage:**  
Medium

### AYOBA



Ayoba is a hybrid onion with globe-shaped bulbs and cream-gold skin. It is suitable for mechanical harvest and has High Resistance to Fusarium.

#### FEATURES

**Season:**  
First Early

**Shape:**  
Globe

**Resistance:**  
HR Foc

**Storage:**  
Medium

### CURRAWONG



Currawong is an early season hybrid with great adaptability. It is a globe shaped onion with excellent uniformity and high yield potential. It is resistant to both Pink root and Fusarium.

#### FEATURES

**Season:**  
First Early

**Shape:**  
Globe

**Resistance:**  
IR Foc/Pt

**Storage:**  
Medium



Icon indicates onion variety has intermediate Fusarium basal rot (Foc) resistance.



Icon indicates onion variety has Pink root (Pt) resistance.

## ONION HYBRID



### SV7030NS



SV7030NS is a supermarket favourite thanks to its attractive red, shiny skin and globe shape. It is a red onion with high yield potential that grows uniformly and delivers on quality. This hybrid variety has good pack-out attributes and a high percentage of single centres.

#### FEATURES

**Season:**  
First Early

**Shape:**  
Globe

**Resistance:**  
HR Pt  
IR Foc

**Storage:**  
Short



### PEREZ

Perez is an early season, golden brown, vigorous export onion. It has large round bulbs with excellent uniformity and storage potential.

#### FEATURES

**Season:**  
Early

**Shape:**  
Globe

**Resistance:**  
-

**Storage:**  
Very long



### DEVONPORT

Devonport is an early season ELK type onion, which is well suited to the Canterbury region. Devonport produces uniform bulbs with excellent storage and can be planted after Perez.

#### FEATURES

**Season:**  
Early

**Shape:**  
Globe

**Resistance:**  
-

**Storage:**  
Long

## ONION HYBRID



### WAIKATO

Waikato is a mid-late season hard storage onion with tightly adhering golden brown scales. Waikato is adapted for export from southern hemisphere producers to Europe and Asia. Waikato can be stored up to 6 months and has a shorter growing time compared to other varieties in the same timeslot.

#### FEATURES

**Season:**  
Main/Late

**Shape:**  
Globe

**Resistance:**  
–

**Storage:**  
Very long

### CASSOWARIE



Cassowarie offers high yield potential, a consistent globe shape and appealing brown colour. Cassowarie was developed specifically for the NZ growers who prefer to sow in the later planting window. It stores well, meaning it is suitable for export and has a good pack-out rate that saves time and money.

#### FEATURES

**Season:**  
Late

**Shape:**  
Globe

**Resistance:**  
IR Pt

**Storage:**  
Long



Icon indicates onion variety has intermediate Fusarium basal rot (Foc) resistance.



Icon indicates onion variety has Pink root (Pt) resistance.

# SOWING/HARVEST GUIDE

■ Optimal Sowing    
 ■ Adaptability    
 ■ Harvesting

VARIETY	MAY	JUN	JUL	AUG	SEP	OCT	NOV	DEC	JAN	FEB	MAR	APR
<b>PUKEKOHE</b>												
SVNH3211*	Optimal Sowing	Optimal Sowing						Harvesting				
AYOBA	Optimal Sowing	Optimal Sowing						Harvesting				
CURRAWONG	Optimal Sowing	Optimal Sowing						Harvesting				
SV7030NS		Optimal Sowing						Harvesting				
WAIKATO				Optimal Sowing	Optimal Sowing					Harvesting	Harvesting	
CASSOWARIE				Optimal Sowing	Optimal Sowing					Harvesting	Harvesting	
<b>HAWKE'S BAY</b>												
AYOBA	Optimal Sowing	Optimal Sowing						Harvesting				
CURRAWONG		Optimal Sowing	Optimal Sowing					Harvesting				
SV7030NS		Optimal Sowing	Optimal Sowing					Harvesting				
PEREZ		Optimal Sowing	Optimal Sowing	Optimal Sowing	Optimal Sowing				Harvesting			
WAIKATO				Optimal Sowing	Optimal Sowing					Harvesting	Harvesting	
CASSOWARIE				Optimal Sowing	Optimal Sowing					Harvesting	Harvesting	
<b>CANTERBURY</b>												
PEREZ			Optimal Sowing	Optimal Sowing	Optimal Sowing					Harvesting	Harvesting	
DEVONPORT				Optimal Sowing	Optimal Sowing					Harvesting	Harvesting	
WAIKATO					Optimal Sowing							Harvesting
CASSOWARIE					Optimal Sowing							Harvesting

\*This planting window is an estimate only. Defined planting window will be confirmed after completion of trial process.





## LEEK

---



### VOLTA

Volta is a main season hybrid leek that is fast-growing with a long, bulb-free shank and small root plate. The plant is extremely upright and has a dark green colour. Volta has an impressive shank length and looks good on the shelf.

### FEATURES

---

**Resistance:**

–

---

## SPRING ONION

---



### GREEN BANNER



Green Banner is a sturdy, uniform and vigorous onion. It is heat tolerant and holds well in the garden as it's slow to bolt or bulb. Green Banner's stems are glossy white and the leaves are full and dark green.

### FEATURES

---

**Resistance:**

HR Foc  
IR Pt

---



Icon indicates onion variety has intermediate Fusarium basal rot (Foc) resistance.



Icon indicates onion variety has Pink root (Pt) resistance.

# TOMATO

Tomato, Rootstock Tomato



SCAN ME

*View our range of  
Tomato and Rootstock*



## TOMATO



### ENTICE

Be enticed with Entice from Seminis. A gourmet tomato producing firm fruit, between 160–180g with good colour. Entice is a compact, manageable and determinate plant that has high setting ability under hot conditions that does not require trellising.

### FEATURES

**Type:**

Determinate

**Shape:**

Deep Obiate

**Weight:**

160–180g

**Resistances:**

HR ToMV:0-2/Fol:0,1/Va:0/Vd:0  
IR TYLCV



### PINNACLE

Pinnacle – at the top of its field! This variety is highly adaptable with excellent weather tolerance. It is a high-yielding variety that produces medium-to-large, uniform fruit with a brilliant red colour. Fruit is early maturing and of a consistently high quality.

### FEATURES

**Type:**

Indeterminate Round/Gourmet

**Shape:**

Deep oblate

**Weight:**

130–140g

**Resistances:**

HR ToMV:0-2/Aal/Fol:0-2/Sb/Sl/Ss/  
Va:0/Vd:0



# TECHNICAL INFORMATION

VARIETY SUMMARIES, RESISTANCE CODES,  
SEED QUALITY, QUALITY ASSURANCE

“

I know that with Seminis,  
I'm safe and secure.

They have always  
showed their quality  
and wide knowledge.

”

*SEMINIS GROWER*



## BROCCOLI

VARIETY	SEASON	HEAD SHAPE	BEAD SIZE
FANTASTICO	Transition	Dome	Fine
IRON CMS	Transition	Dome	Fine to medium
TITANIUM	Cool/Transition	Dome	Fine
LEGACY	Cool	Dome	Fine to medium
CHEVALIER	Cool	Dome	Fine to medium
HERITAGE	Cool	Dome	Fine to medium
EIFFEL	Spring/Summer	Dome	Fine to medium

## CAULIFLOWER

VARIETY	SEASON	CURD COLOUR	CURD APPEARANCE	PLANT VIGOUR
SV5965AC	Winter	White	Large, heavy and dense	Strong
SV5982AC	Cool	White	Large, heavy and dense	Strong
TIPTON	Transition	White	Medium to deep	Medium to strong
CHEDDAR	Cool	Orange	Firm, smooth and medium	Medium

## SPINACH

VARIETY	VIGOUR SCALE (1 = LOW, 10 = HIGH)	LEAF SHAPE	SMOOTHNESS	LEAF COLOUR	RESISTANCE	USAGE
SV2157VB	3	Oval	Semi-savoy	Dark green	HR Pe:1-13,15,16,18	Baby leaf
MAGNETIC	3	Oval to slightly pointed	Semi-savoy	Dark green	HR Pe:1-15,17	Baby leaf
KONA	3	Round to oval	Semi-savoy to Savoy	Medium dark green	HR Pe:1-15,17	Baby leaf
SV2146VB	3	Oval	Semi-savoy	Dark green	HR Pe:1-13,15,16,18	Baby leaf
RANGITOTO	7	Round to oval	Semi-savoy	Medium dark green	HR Pe:1-16,19	Baby leaf
SV3580VC	6	Oriental	Smooth	Dark green	HR Pe:1-13,15,16,18	Baby leaf and bunching
RS 06683549	8	Oriental	Smooth	Dark green	HR Pe:1-11,13,15,16,18	Baby leaf and bunching
MOTUTAPU	8	Oval to slight point	Smooth to Semi-savoy	Medium dark green	HR Pe:1-16,19	Baby leaf

## LETTUCE

VARIETY	SEASON	RESISTANCE
<b>ICEBERG</b>		
Bubba	Winter	-
<b>FANCY</b>		
Frillice	Spring, autumn, summer	HR BI:16,17 IR LMV:1

## SWEET CORN

VARIETY	COB SIZE	COLOUR	RESISTANCE
<b>SV1446SD</b>	20.5 x 5cm	Yellow	HR: RpG59 IR MDMV/SCMV/Pst/Bm:0/Et:1
<b>ACCELERATION</b>	20 x 4.5cm	Yellow	HR RpG5 IR MDMV/SCMV/Pst/Bm:0/Et:1
<b>SV1514SK</b>	20 x 4.5cm	Yellow	HR RpG5 IR MDMV/SCMV/Pst
<b>EX 08705788</b>	20 x 5cm	Bi-colour	HR Rp1D IR MDMV/SCMV
<b>INCEPTION</b>	19 x 5cm	Bi-colour	HR Rp1D+RpG IR Pst/Et

## ONION – HYBRID

VARIETY	COLOUR	SHAPE	SEASON	STORAGE	RESISTANCE
AYOBA	Brown	Globe	First Early	Medium	HR Foc
CURRAWONG	Brown	Globe	First Early	Medium	IR Foc/Pt
SV7030NS	Red	Globe	First Early	Short	HR Pt IR Foc
PEREZ	Brown	Globe	Early	Very long	–
DEVONPORT	Brown	Globe	Early	Long	–
WAIKATO	Brown	Globe	Main/Late	Very long	–
CASSOWARIE	Brown	Globe	Late	Long	IR Foc
SVNH3211	Brown	Globe	First Early	Medium	Full disease resistance claim to be confirmed.

## TOMATO

VARIETY	TYPE	SHAPE	WEIGHT (G)	RESISTANCE
ENTICE	Determinate	Deep oblate	160–180g	HR ToMV:0–2/Fol:0,1/Va:0/Vd:0 IR TYLCV
PINNACLE	Indeterminate Round/Gourmet	Deep oblate	130–140g	HR ToMV:0–2/Aal/Fol:0–2/Sbl/SI/Ss/Va:0/Vd:0

## RESISTANCE CODES

---

Codes indicate available resistance in the Vegetable Seeds variety catalogue. Bayer has exercised reasonable care and skill in compiling this catalogue. The varieties with disease resistance claims have been tested for specified disease resistance. All resistances quoted refer only to races or pathotypes of the variety. It is important to recognise that the response of resistant plants to pests or pathogens can vary according to host age and depend on environmental factors. New and/or atypical pest or pathogen biotypes, races, or strains may overcome resistance, sometimes completely.

The descriptions, advice, resistance claims and egestion cycles that are presented in this pricelist are intended for general guidance only. The user should apply it in accordance with knowledge and experience of local conditions.

Bayer follows International Seed Federation (ISF) recommendations concerning Resistance Codes. Bayer cannot accept any liability in connection with this product guide and does not guarantee any result or performance.

### DISEASE RESISTANCE TERMINOLOGY

**Resistance:** is the ability of a plant variety to restrict the growth and development of a specified pest or pathogen and/or the damage they cause when compared to susceptible plant varieties under similar environmental conditions and pest or pathogen pressure. Resistant varieties may exhibit some disease symptoms or damage under heavy pest or pathogen pressure. Two levels of resistance are defined.

**High/standard resistance (HR):** plant varieties that highly restrict the growth and development of the specified pest or pathogen under normal pest or pathogen pressure when compared to susceptible varieties. These plant varieties may, however, exhibit some symptoms or damage under heavy pest or pathogen pressure.

**Moderate/intermediate resistance (IR):** plant varieties that restrict the growth and development of the specified pest or pathogen, but may exhibit a greater range of symptoms or damage compared to high/standard resistant varieties. Moderately/intermediately resistant plant varieties will still show less severe symptoms or damage than susceptible plant varieties when grown under similar environmental conditions and/or pest or pathogen pressure.

**Tolerance:** is the ability of a plant variety to endure abiotic stress without serious consequences for growth, appearance and yield. Bayer makes NO claims of tolerance to diseases or disorders caused by pests.

**Note:** All resistances are now referred to as High Resistance (HR) or Intermediate Resistance (IR). In this catalogue all resistances are HR unless specified.

## RESISTANCE CODES

LEAFY		
CODE	SCIENTIFIC NAME	ENGLISH NAME
<b>SPINACH</b>		
<b>Pe(ex.Pfs)</b>	<i>Peronospora farinosa</i>	Downy mildew
<b>Cd</b>	<i>Colletotrichum dematium</i>	Anthracnose
<b>CMV</b>	–	Cucumber mosaic virus
<b>Cv</b>	<i>Cladosporium variable</i>	Cladosporium leaf spot
<b>Fo</b>	<i>Fusarium oxysporum</i>	–
<b>Sb</b>	<i>Stemphylium botryosum</i>	Stemphylium leaf spot
<b>LETTUCE</b>		
<b>LMV</b>	<i>Lettuce Mosaic Virus</i>	Lettuce mosaic virus
<b>Nr</b>	<i>Nasonovia ribis-nigri</i>	Nasonovia
<b>Fol</b>	<i>Fusarium oxysporum f. sp. lactucae</i>	Lettuce fusarium wilt
<b>Bl</b>	<i>Bremia lactucae</i>	Downy mildew

## RESISTANCE CODES

LARGE SEED		
CODE	SCIENTIFIC NAME	ENGLISH NAME
SWEET CORN		
Bm	<i>Bipolaris maydis</i>	Southern corn leaf blight and stalk rot
Et	<i>Exserohilum turcicum</i>	Northern corn leaf blight
MDMV	–	Maize dwarf mosaic virus
Ps	<i>Puccinia sorghum</i>	Common rust
Pst	<i>Pantoea stewartii (Erwinia stewartii)</i>	Stewarts disease (bacterial wilt)
Rp1D	–	Common rust
RPG	–	Common rust
SCMV	–	Sugarcane mosaic virus

ONION		
CODE	SCIENTIFIC NAME	ENGLISH NAME
Foc		Fusarium basal rot
Pt		Pink root

## RESISTANCE CODES

TOMATOES		
CODE	SCIENTIFIC NAME	ENGLISH NAME
<b>Aal</b>	<i>Alternaria alternate f.sp. lycopersici</i>	Alternaria stem canker
<b>Fol</b>	<i>Fusarium oxysporum f.sp. lycopersici</i>	Fusarium wilt
<b>Ma</b>	<i>Meloidogyne arenaria</i>	Root knot nematode
<b>Mi</b>	<i>Meloidogyne incognita</i>	Root knot nematode
<b>Mj</b>	<i>Meloidogyne javanica</i>	Root knot nematode
<b>ToMV</b>	–	Tomato mosaic virus
<b>TYLCV</b>	–	Tomato yellow leaf curl virus
<b>Va</b>	<i>Verticillium albo-atrum</i>	Verticillium wilt
<b>Vd</b>	<i>Verticillium dahliae</i>	Verticillium wilt

## SEED QUALITY

---

### HOW BAYER PRODUCES HYBRID SEEDS

Hybrid seed production at Bayer requires rigorous processes to ensure high standards of quality. Hybrid parent lines are carefully shipped to Bayer owned farms or to contracted seed growers. The male and female seeds are then planted side by side. Once the parental plants flower, they cross pollinate to produce the seed-bearing fruit. The fruits are monitored as they mature until they are ready for harvest. Finally the commercial hybrid seeds, also called F1 seeds, are extracted from the fruit and shipped to one of twelve Bayer operations facilities where they are prepared for sale.

### ONLY THE BEST SEEDS ARE KEPT

Growing and harvesting high quality seeds is just the beginning. The seeds must be cleaned and conditioned, dried, sorted by size (for precision planters), thoroughly tested and packed prior to shipping. Many growing areas also require seeds to be treated with protectants, primed or pelleted. All of our seed is stored in bulk containers under controlled storage conditions. It is packed to order based on each customer's specifications.

These services all require years of training as well as specialised equipment and logistical systems to do well. It's one of the reasons why growers prefer to purchase seed each season from Bayer.

All of our processes are designed to protect the quality of the seed – a fragile, living product.

### CONDITIONING

Seed conditioners separate fully formed seeds by weight, size, shape and colour. The process also removes plant materials, debris, dead seed and seed from other plants.

### SEED TREATMENTS

Seed treatments can be applied to seeds to protect them from disease during their most vulnerable time in the ground. They can also enhance germination, vigour and uniformity in the field. Common treatments include film coating, an application that coats the seed with a polymer that can hold to seed protectants.

The bright colour also makes the seed easy to identify during planting. In addition, some types of seed are "primed"

to enhance its performance. Primed seeds have been hydrated and re-dried prior to sale. Another popular option is pelleting, a thick coating that makes very small seeds larger, perfectly round, and easy to handle. The pellet typically splits open or dissolves once it is in the ground and exposed to water.

### PACKAGING

Highly accurate machines are used to pack seed by count, weight and volume, depending on the crop and market. Pouches, foils, cans and pails are specially sealed to protect the seed during shipment and storage.



## QUALITY ASSURANCE

---

### HEALTH, PURITY AND VIGOUR

Bayer completes nearly 500,000 quality checks on our seed each year. This rigorous testing is the centerpiece of our comprehensive quality assurance system. A single seed lot can be subjected to several dozen quality measurements. Several of our labs have been accredited by government auditors, such as the National Seed Health System in the United States and Naktuinbouw, the Dutch Inspection Service for Horticulture. To earn this prestigious status we have proven that our test results are reliable, reproducible and independent from commercial influence.

### GERMINATION AND VIGOUR TESTING

Completed in specialised growth chambers and greenhouses, these tests provide one of the most important quality measurements of seeds. High germination percentages are indicative of health, vigour and the overall quality of the seeds. Our procedures meet or exceed international standards.

### PHYSICAL PURITY

Using magnifiers and microscopes, technicians examine seed lots to detect weed seeds or other impurities.

Any irregularities are documented and the seed re-conditioned or discarded, if needed.

### IDENTITY AND PURITY TESTING

It is impossible to identify a plant variety simply by looking at its seed. With 3,500+ products, Bayer has developed highly accurate methods to confirm identity and measure the percentage of hybridity of harvested seeds. Using equipment similar to what is found in sophisticated medical labs, Bayer technicians can even identify specific products via their DNA fingerprint. When needed, field tests called “grow-outs” are used to visually confirm that the plants have the right phenotype.

### SEED HEALTH

Destructive bacteria and plant viruses can be transmitted on seeds and Bayer takes extreme caution to prevent infection during seed production and afterwards. Random samples of seeds (usually 30,000 or 50,000 seeds per lot) are drawn from seed lots and tested for the presence of pathogens that are known to be problematic.

In addition to grow-outs, where seeds are planted in greenhouses and tested for disease symptoms, the team uses a number of highly sensitive tests to find seeds that may carry pathogens. This may include enzyme-based ELISA assays and DNA-based PCR (polymerase chain reaction) tests. Bayer has made many breakthroughs in the area of seed health, and for the benefit of the industry has often shared that knowledge.

### QUALITY ASSURANCE RESEARCH

Bayer has a special team of quality experts whose job is to find new and innovative ways to improve the health and quality of seed. They study the physiological, horticultural and genetic factors that affect seed quality. We then use this information to guide our product development as well as the processes and technologies employed in seed production and operations.





**COMMERCIAL/SALES**

**DANIELLE BULLER**

Seminis Australia  
+61 400 949 065  
danielle.buller@bayer.com

---



**NICK WILLIAMS**

Seminis New Zealand  
Regional Business Manager  
+64 21 961 707  
nick.williams@bayer.com

---



**NATHAN GORTER-SMITH**

Seminis New Zealand  
Market Development Specialist  
+64 21 961 969  
nathan.gorter-smith@bayer.com

---



Scan the QR code  
to find your local  
representative

Meet the Team



For more information visit  
**[vegetables.bayer.com](https://vegetables.bayer.com)**  
or contact your local representative

**Vegetable Seeds Customer Service**

Phone: (09) 239 0666

Email: [vegetablesales.nz@bayer.com](mailto:vegetablesales.nz@bayer.com)

**Bayer New Zealand Ltd**

704 Harrisville Road

Pukekohe RD2 2677

Phone: (09) 239 0666



All information concerning the varieties given orally or in writing by Bayer New Zealand Pty Ltd. or its employees or agents, including the information in this product guide, is given in good faith, but is not to be taken as a representation or warranty by Bayer New Zealand Pty Ltd. as to the performance or suitability of those varieties which may depend on local climatic conditions and other factors. Bayer New Zealand Pty Ltd. assumes no liability for any such information. This information shall not form part of any contract with Bayer New Zealand Pty Ltd. unless otherwise specified in writing.

Copyright © 2004–2022 Bayer Group. All rights reserved. Seminis and DeRuiter are registered trademarks of Bayer Group.

The terms and abbreviations used by Bayer New Zealand Pty Ltd to describe the reaction of plants obtained from the seeds to pests or pathogens and to abiotic stresses such as (High/standard resistance (HR), moderate/intermediate resistance (IR), Immunity, Susceptibility and Tolerance shall have the meaning given by the International Seed Federation and can be found on ISF website ( [www.worldseed.org](http://www.worldseed.org)).

Individual results may vary, and performance may vary from location to location and from year to year. This result may not be an indicator of results you may obtain, as local growing, soil and weather conditions may vary. Growers should evaluate data from multiple locations and years whenever possible.